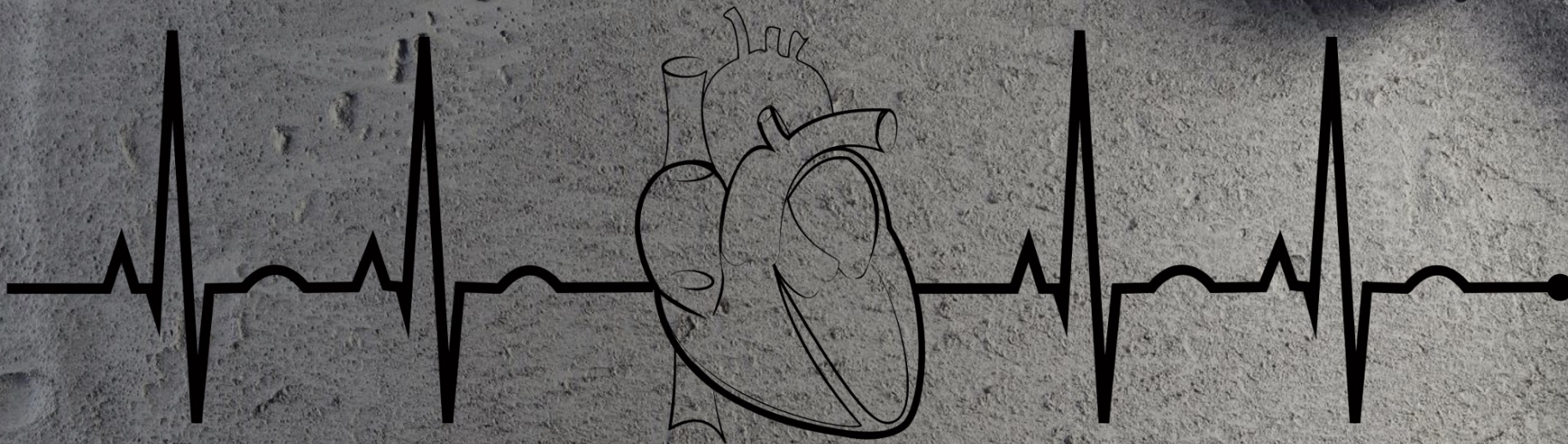


ECG EXERCISES[©]



29.06.2023

ECG Exercise Nr. 30

What is the Diagnosis?



Universitätsklinikum
Halle (Saale)



MITTELDEUTSCHES
HERZZENTRUM
Universitätsmedizin Halle (Saale)

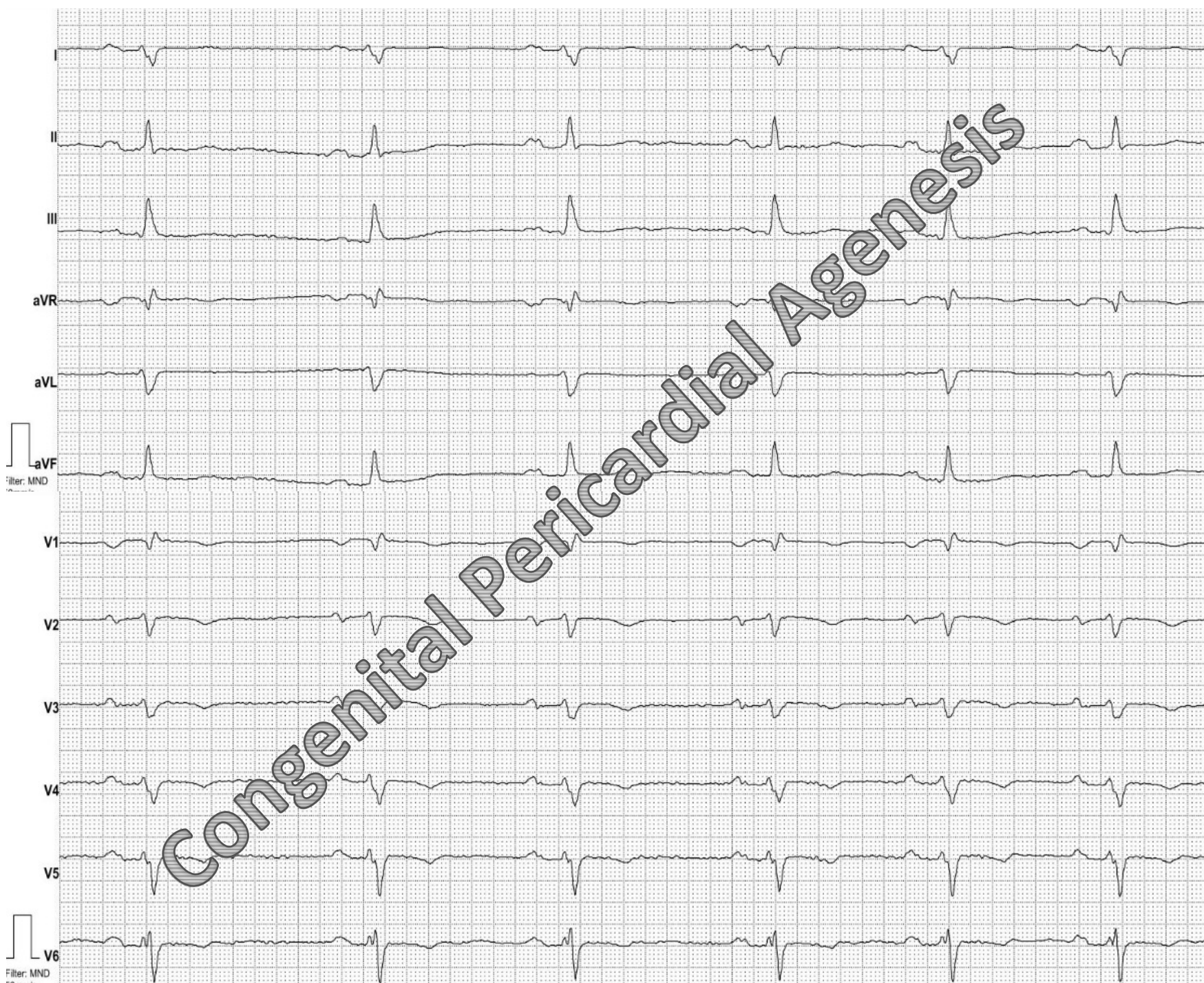


Medizinische Fakultät
der Martin-Luther-Universität
Halle-Wittenberg

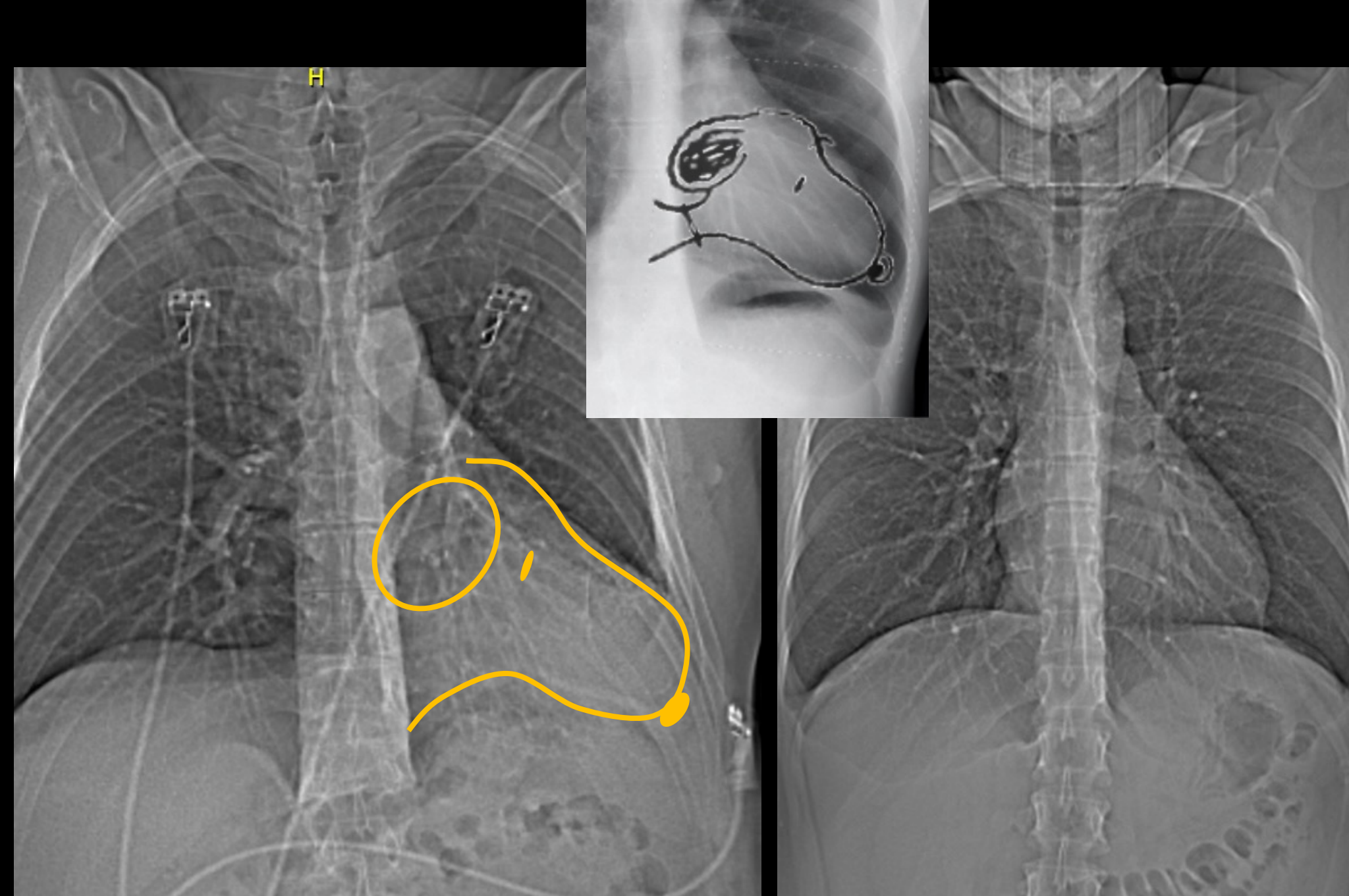
<https://www.arasharya.de/ecg-exercises/>

ECG1:

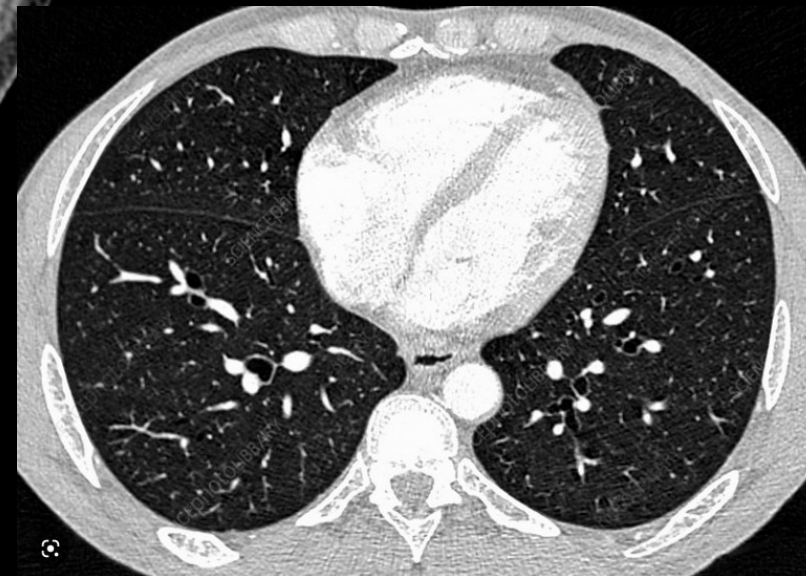
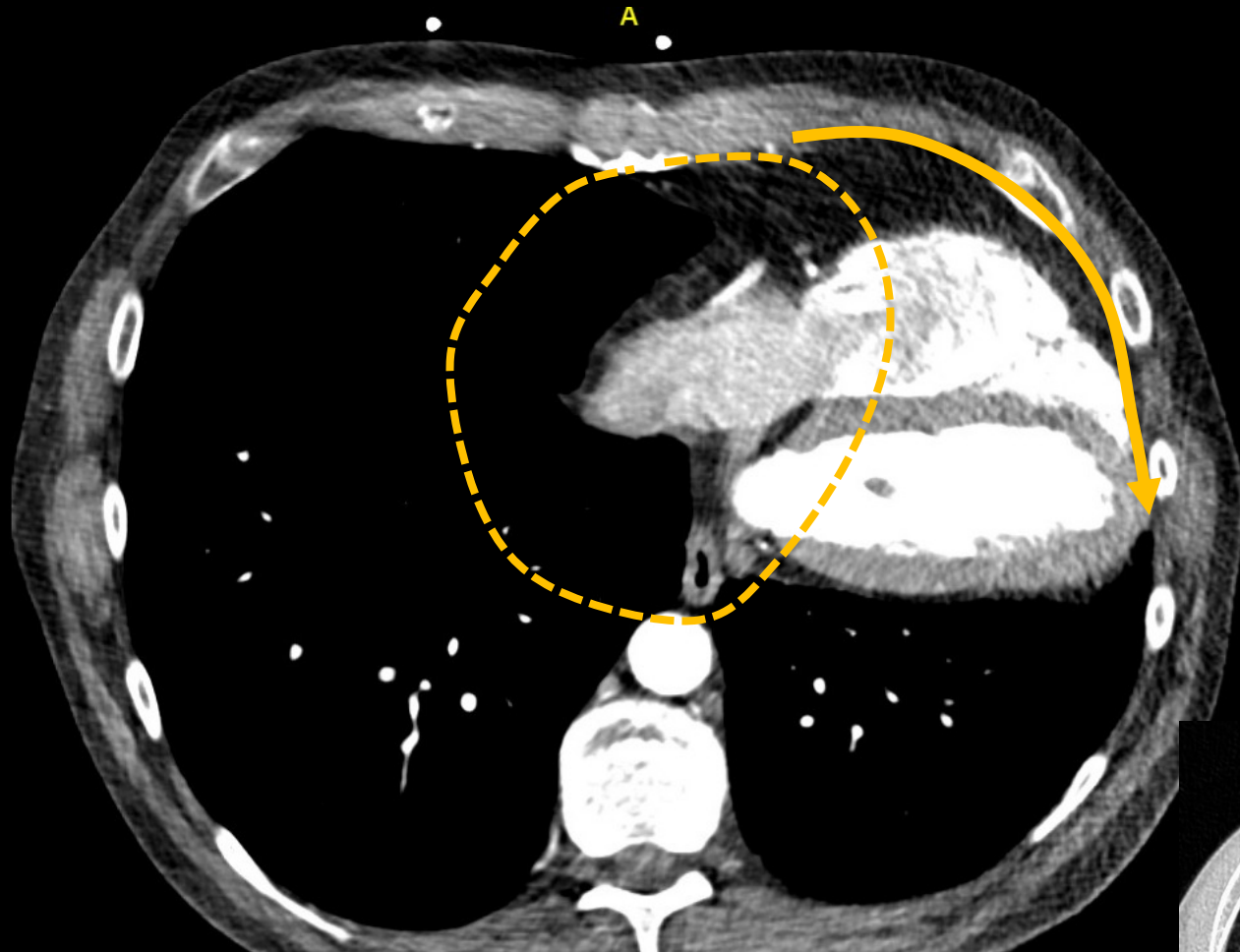
- 58-year-old man
- Frequent palpitations
- SVT documented



Baseline ECG



**CXR:
Snoopy-Sign**



Thorax CT



Baseline ECG

congenital pericardial agenesis*

The first description of a congenital pericardial agenesis (CPA) is attributed to the Paduan anatomist Realdo Colombo, in **1559**.

It is an exceedingly rare condition with an estimated incidence 2-4:100.000, more frequent in males.

The true prevalence may be, however, underestimated, as most patients are asymptomatic, and the diagnosis is tricky and likely to be missed.

CPA is generally an isolated finding, but is occasionally associated with other congenital cardiac or systemic disorders, most notably atrial septal defects, tricuspid atresia, bronchogenic cysts, pectus excavatum, or included in the spectrum of rare congenital syndromes, like the VATER syndrome (vertebral defects, anal atresia, trachea-esophageal fistula, and radial and renal dysplasia).

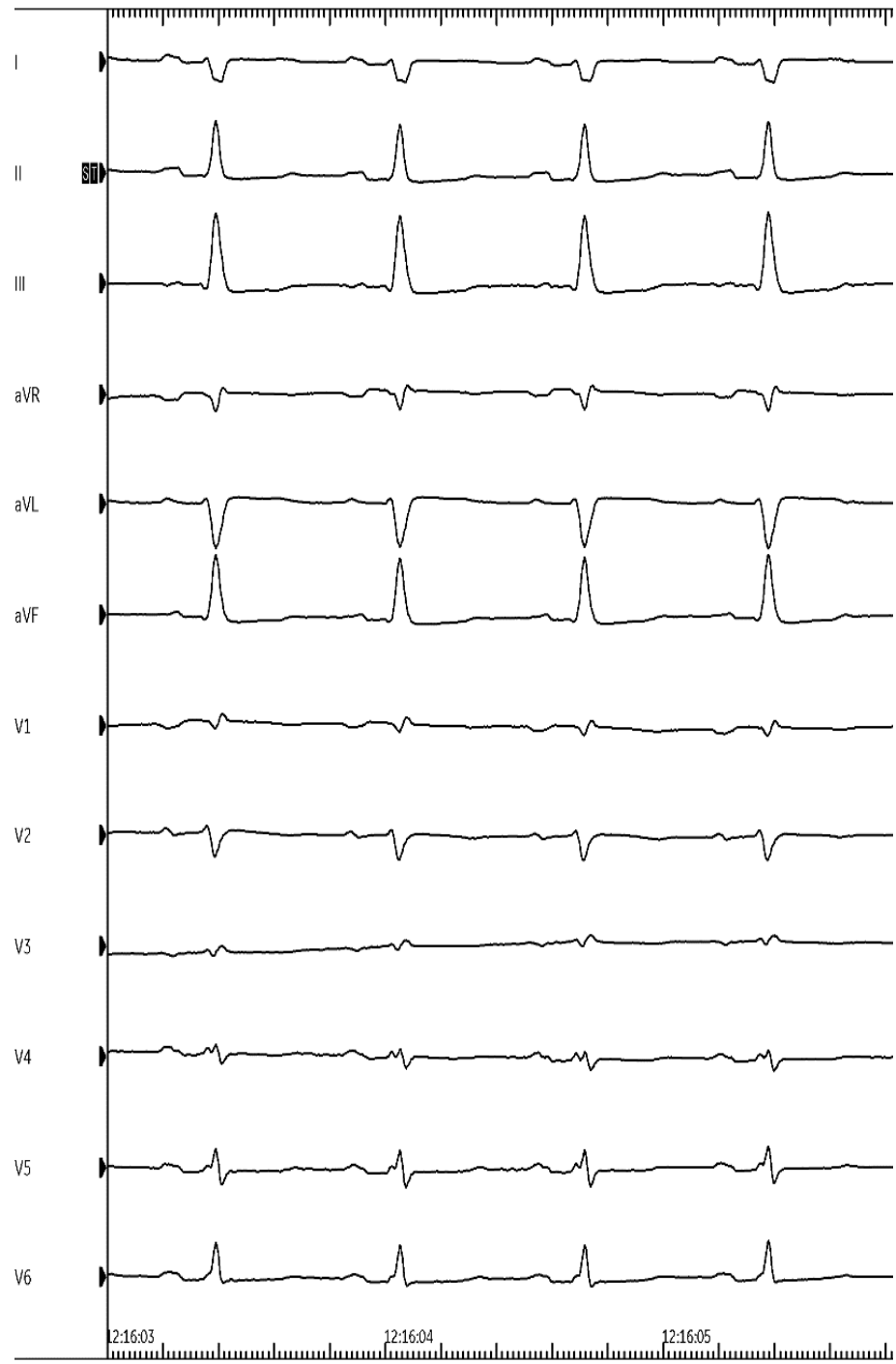
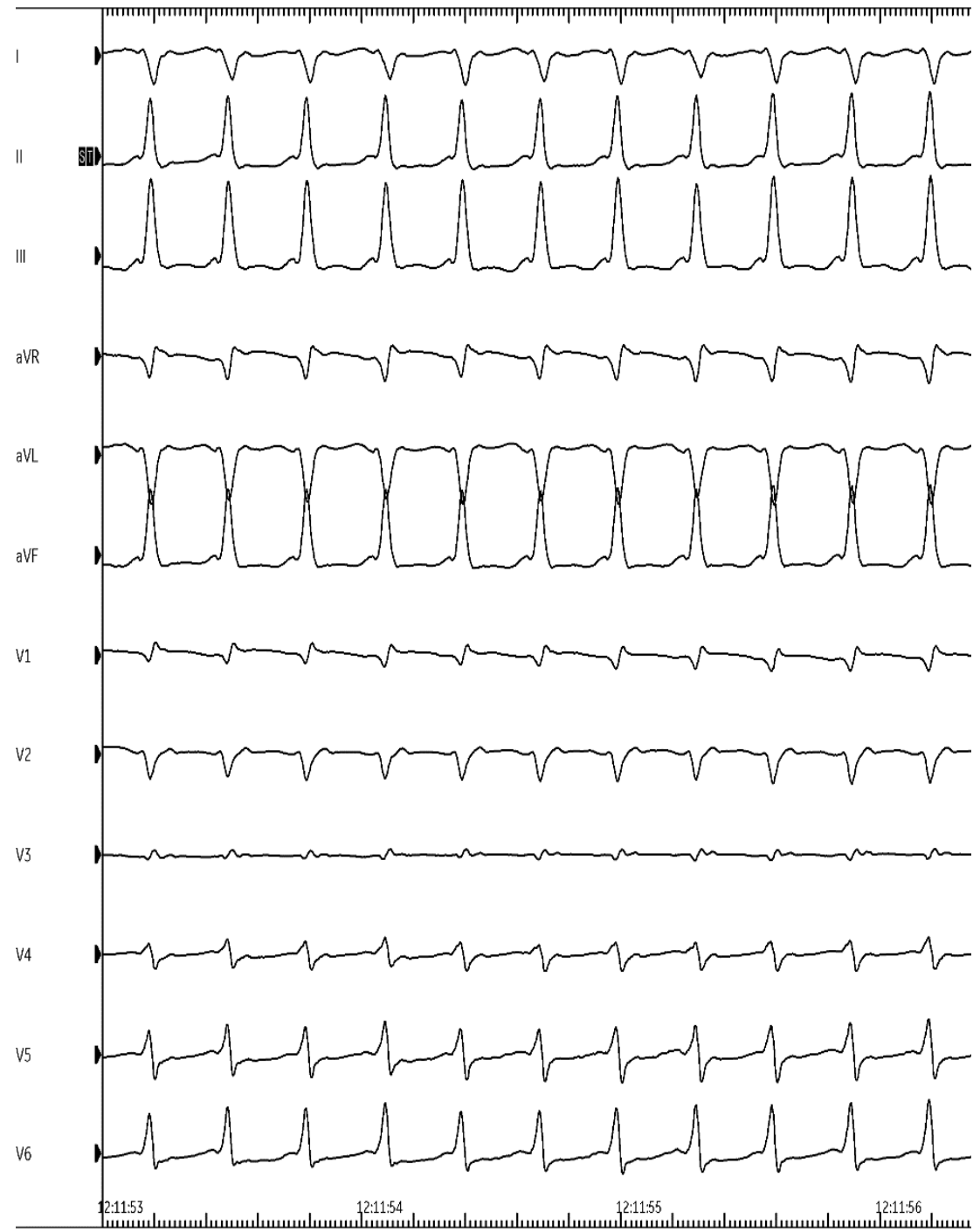


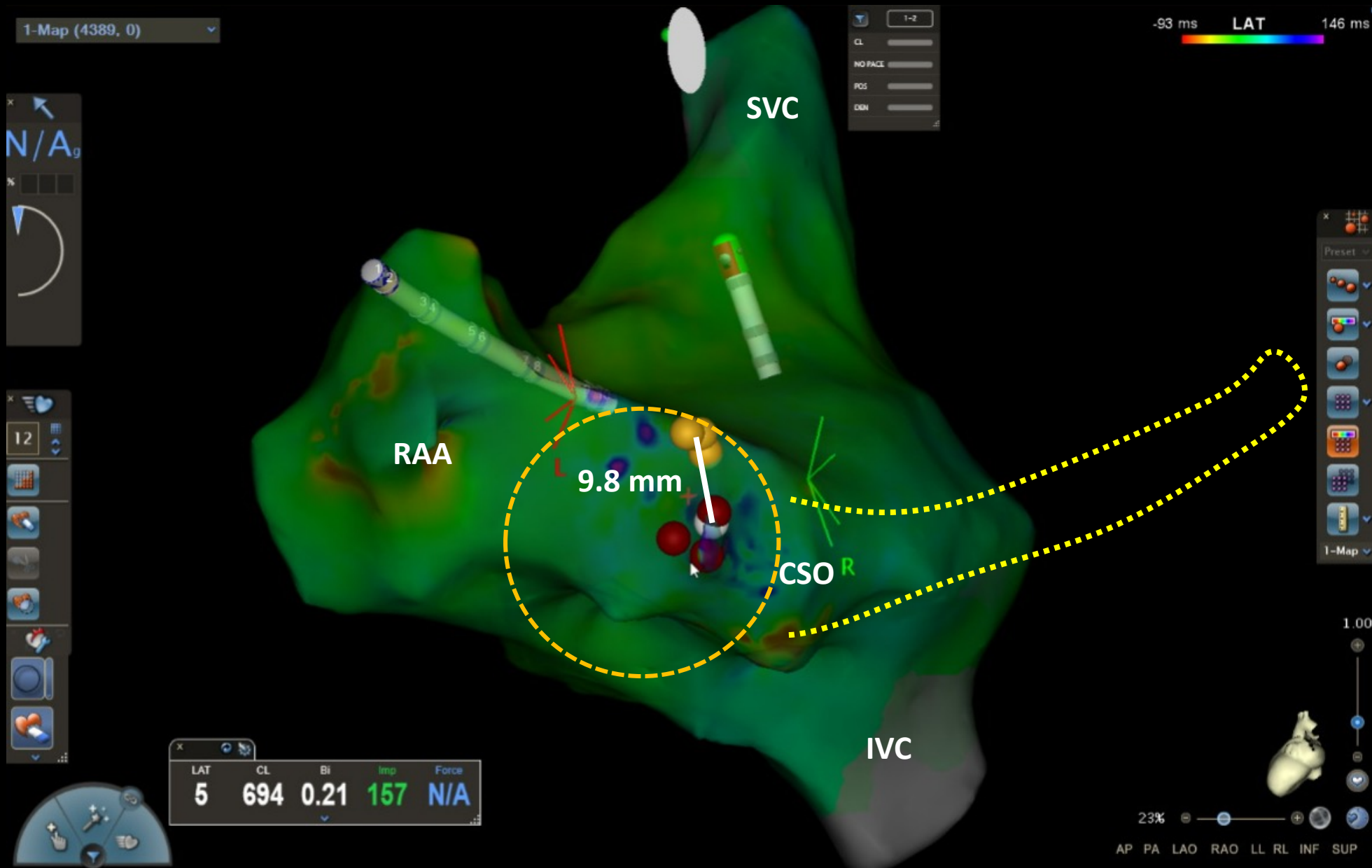
Table 1: Classification of Congenital Pericardial Agenesis

	Reported prevalence	Complications
Complete bilateral	9%	Rare
Complete left-sided	70%	Rare
Complete right-sided	17%	Rare
Partial right- or left-sided	3-4%	Frequent

Data from^{1,4} The left-sided pericardial defects are more frequent than the right-sided ones, due to embryologic differences in the development of the two sides.² The complete pericardial defects are generally free of complications. Conversely, partial defects may be occasionally life-threatening, due to the risk of herniations or strangulation of cardiac structures,¹⁰ or compression of coronary artery.⁶

* <https://www.acc.org/latest-in-cardiology/articles/2020/07/27/09/25/congenital-pericardial-agenesis>





Mapping

LL/PA Projection looks like standard LAO

Thank you for your attention!



Universitätsklinik und Poliklinik für Innere Medizin III
Kardiologie, Angiologie und internistische Intensivmedizin
Martin-Luther-Universität Halle (Saale)

<https://www.arasharya.de>

<https://www.youtube.com/user/arasharya/>

https://twitter.com/ArashArya_EP



Medizinische Fakultät
der Martin-Luther-Universität
Halle-Wittenberg

